



ColourDür

"High Performance Coil Coatings System"





JSW Paints ColourDur range of coil coatings are specially formulated by JSW Paints for use in roofing, construction & infrastructure projects, appliance, furniture and general engineering industries across domestic and industrial segments.

The JSW Paints ColourDur Polyester Coating Systems are available for steel and aluminum substrates, in a wide range of colours and gloss levels. ColourDur coatings offer excellent durability with a wide range of colours to address aesthetic & durability needs of customers.

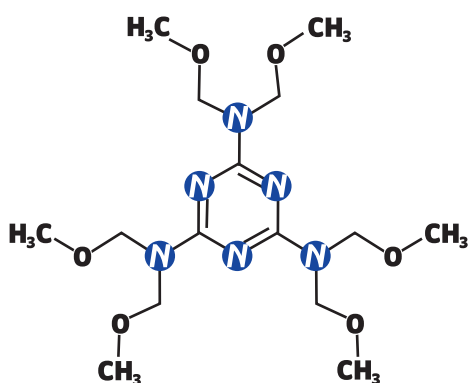
POLYESTER COATING SYSTEM

Polyester coating system is the workhorse coating of pre-coated metal. A standard polyester coating system with 20-25 micron coating can offer economy with good weathering performance and mechanical properties, enhancing substrate life. Variants of polyester coatings are available to improve durability, UV resistance and mechanical properties of the coating. Key advantages of polyester coatings are:

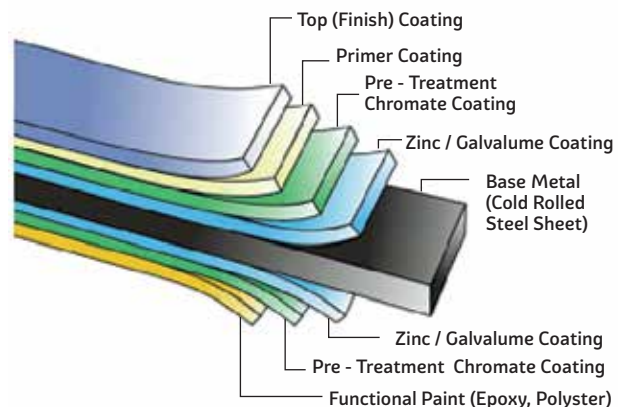
Strength & Versatility

Surface protection for metal substrates is more than just functional. It can be both beautiful and affordable with the enhanced ColourDür coating system, especially formulated for today's building and construction industry requirements.

Polyester Melamine Matrix



Different Layers of colour coated steels



Polyester coatings can be formed in a wide range of different colours with a balance blend of durability, flexibility and affordability. The versatility of polyester system is to provide effective and economic coating solutions for every requirement of steel industry like roofing, cladding, sandwich panels etc. in several finishes like wrinkle/ textured finish, high gloss or matt etc, and could be customized to suit customer needs.

Application Performance

JSW Paints ColourDur coil coatings are an excellent choice for both residential and commercial building projects. Best suited for all environmental conditions, from weather protection to high traffic & industrial areas. JSW Paints ColourDur coatings are designed as per ASTM/EN standards to meet the performance demands of today's building and construction market.



Durability

Available in a wide range of colors, ColourDur coatings are highly resistant to abrasion, metal marking, pressure-mottling, and require minimal maintenance. Surface contaminants may be easily removed from ColourDur coatings using mild solutions of conventional detergents. ColourDur coatings have been rigorously tested for various atmospheric and weather conditions and it exhibits excellent durability, film integrity, resistance to chalking fading and colour change.

Each type of polyester coating system is formulated to provide:

- *Smooth, fast and trouble free application*
- *Excellent forming properties by giving very good scratch resistance*
- *Wide range of colours and gloss*
- *Durability to match the end user requirements*

PRODUCT PORTFOLIO

01. Standard Polyester Coating System (SPCS) - T100 to T109 series

Standard Polyester Coating System (SPCS) is produced using linear saturated polyester resins. SPCS Coatings offers the right blend of coating properties for a wide range of applications; from economical domestic roofing to industrial structures. The strength of SPCS Coating System provides robustness and economic need to make it a truly versatile product family.

APPLICATIONS

- Industrial and residential roofing
- Wall cladding
- Insulated panels
- Sheds
- Electrical panels & fixtures
- Garage doors
- Steel framing

KEY FEATURES

- Versatility of colour/shades
- Good corrosion resistance
- Ease of application and cost effective
- Good resistance to UV degradation
- Restrained resistance to chemicals, dirt and stains

02. Silicone Modified Polyester Coating System (SMPS) (T120 Series)

Silicone Modified Polyester Coating System (SMPS) is a next generation polyester which is chemically modified with silicone resin. This product is engineered to meet challenges for various industrial applications combining good hardness and flexibility with exceptional resistance to chalking and staining. The SMPS System provides excellent long-term gloss retention and corrosion protection in severe environments like seashores, industrial complexes etc. SMPS are also known for temperature resistance. The long term weathering performance coating makes you select for commercial and monumental exterior application like roof, side panel, fascia etc.

APPLICATIONS

- *Industrial roofing*
- *Infrastructure projects*
- *Wall cladding*

KEY FEATURES

- *Superior weather resistance*
- *Excellent heat resistance*
- *Good exterior durability*

03. High Durable Polyester Coatings System (HDPS) T121 Series

High Durable Polyester Coatings System (HDPS) is made by high molecular weight polyester resin system. JSW Paints designed HDPS specifically for architectural application where colour and gloss retention are critical. HDPS are formulated with advanced polyester resin technology and high performance pigment to confirm & often exceed the performance requirements. HDPS offers superior gloss and colour retention combined with maximum film integrity to ensure long-term cosmetic and functional protection. Superior abrasion and mar resistance to endure the physical abuses that can occur as a result of normal application, fabrication, transportation and installation process. HDPS is also the appropriate choice for building interiors where hardness and abrasion resistance is required.

APPLICATIONS

- Residential & industrial roofing
- Infrastructure projects
- Wall cladding

KEY FEATURES

- Highly durable as compare to SPCS and SMPS coatings
- Best-in category weather resistance
- Best-in category corrosion resistance
- Good resistance to UV degradation

Performance Parameters

S. NO.	TECHNICAL SPECIFICATIONS/ PARAMETERS	SPCS	SMPS	HDPS
01.	Gloss @60°	5~90	5~90	5~90
02.	Solvent Resistance (MEK) 1.5 kg Pressure	>100 DR	>100 DR	>100 DR
03.	Bend Adhesion (max) (NCCAT20) (NoTape off)	0-2T	1-2T	1-2T
04.	Scratch Resistance (ECCAT12)	>2.0 Kg	>2.0 Kg	>2.0 Kg
05.	Pencil Hardness (ASTM D3363)	H-2H	H-2H	H-2H
06.	Cross Hatch Cupping (Adhesion)	7.5mm NTO	7.5mm NTO	7.5mm NTO
07.	Lock Forming Quality (LFQ)	No Crack	No Crack	No Crack
08.	Heat Resistance @ 120°C for 24 Hrs	Delta "E" no more than 2 units change		
09.	Dust Resistance	Good	Excellent	Excellent
10.	Salt Spray (ASTM B117)	1000 Hrs	1000 Hrs	upto 1500 Hrs (Blisters & loss of adhesion 3 mm max from the scribe side)
11.	Humidity (No significant colour change) (ASTM D2247)	1000 Hrs	1000 Hrs	upto 1500 Hrs
12.	QUVA (No significant colour change) (ASTM G154)	1000 Hrs	1000 Hrs	upto 1500 Hrs
13.	Chemical resistance (DIP Method 5% NaOH, 5% H ₂ SO ₄)	No Blistering, Discoloration & Softening after 24 Hrs		
14.	Outdoor corrosion resistance test (EN 10169, Table no 7)	RC1	RC2	RC2
15.	UV resistance for Natural & Artificial testing conditions (EN 10169, Table no 8)	RUV2	RUV2	RUV3

* Above parameters may change based on color/ shade/ environment of use and substrate quality.

ColourDur Coatings could be customized as per customer requirements.



Polyester Coating System Overview

	Resistance to Chalking	Resistance to fading	Flexibility	Aggressive environment	Resistance to impact
SPCS	★★	★★	★★★★	★★★★	★★★★
SMPS	★★	★★★★	★★★★	★★★★	★★★★★
HDPS	★★★★★	★★★★★	★★★★	★★★★★	★★★★

JSW Paints offer suitable Primers (PU & SMP Base) and Back Coats (Epoxy and PU based) for all above Coatings systems.

CONTACT US



*JSW Paints Private Limited,
Off Mumbai - Nasik Highway,
Village Vasind, Taluka Shahpur,
District Thane, PIN 421604,
Maharashtra, India.*

 +91 2527 220022

 cc.coatings@jsw.in

 www.jswpaints.in

