

**LOOKING FOR EXTRA  
CRACK RESISTANCE?**

INTRODUCING

**Aur<sup>us</sup>**

Regal Exteriors

***Flexxtra***

*Engineered  
Flexibility for  
Extra Crack  
Resistance*

**← MORE FLEX →**

**FLEX IN, CRACKS  OUT**







**FLEXTECH**  
WITH ACTIVE NANOBONDS

Equipped with FlexTech with Active NanoBonds Technology,  
Aurus Flexxtra adapts to surface changes,

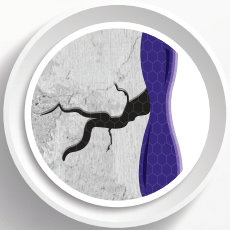
**PREVENTS CRACKING & PEELING,**  
**FOR A LONGLASTING DURABLE FLAWLESS FINISH**



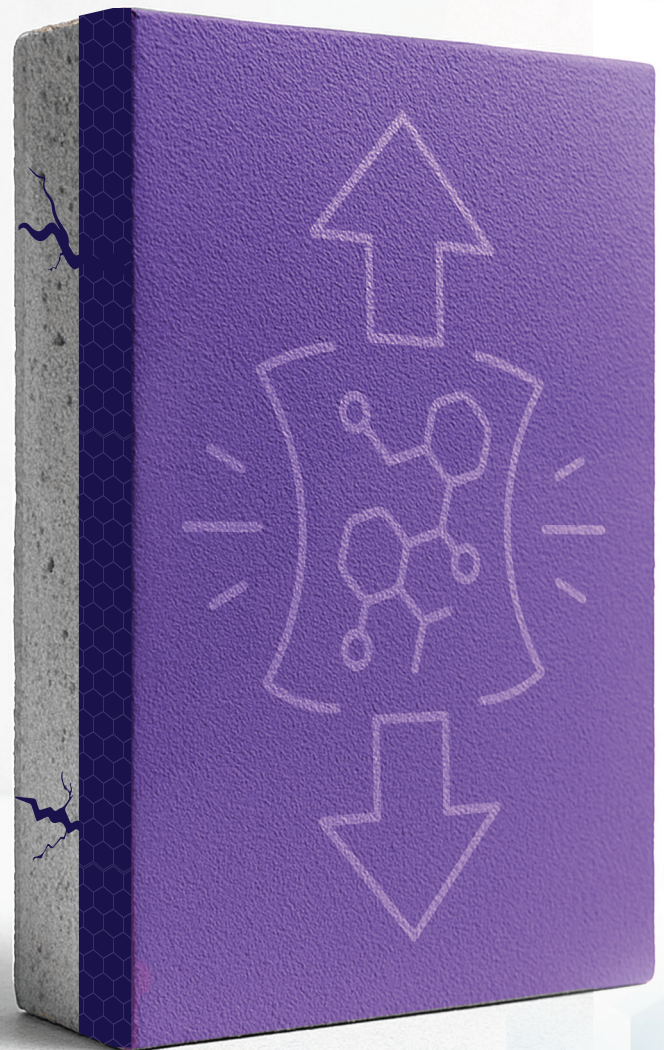
**EXCELLENT  
CRACK BRIDGING**



**HIGH FILM  
STRENGTH**



**SUPERIOR  
ELONGATION**





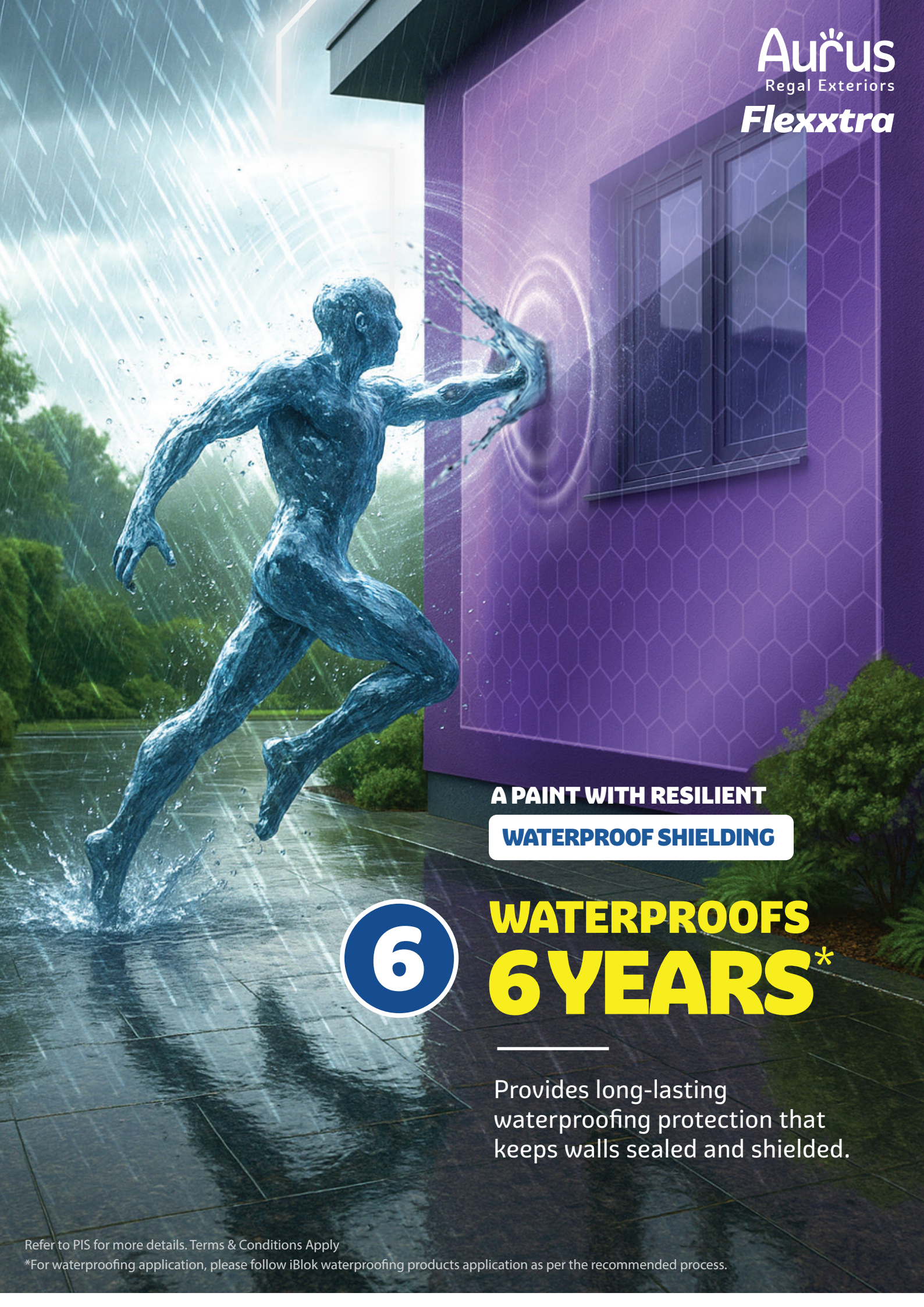
A PAINT THAT IS BUILT  
FOR THE LONG HAUL

**ENDURES  
6 YEARS\***

COME SUN, DUST OR WIND,

**IT STANDS STRONG**





**A PAINT WITH RESILIENT  
WATERPROOF SHIELDING**

**6**

**WATERPROOFS  
6 YEARS\***

Provides long-lasting  
waterproofing protection that  
keeps walls sealed and shielded.





# DUST BLOCK

**Advanced technology that resists dust and pollution  
SO YOUR WALLS STAY**

**FRESH, BRIGHT, AND BEAUTIFUL**





# UV RESISTANT

Reflects harsh UV rays to keep walls from

**CHALKING AND FADING**





## ENHANCED MULTI-BARRIER PROTECTION

**ANTI ALGAL**

**ANTI FUNGAL**

**ANTI CARBONATION**

Multi-layered shield resists carbonation, blocks algae and stops fungal growth, ensuring cleaner, low maintenance walls.



EXPERIENCE

# Aur<sup>us</sup>

Regal Exteriors

**Flexxtra**

*“Thoughtfully designed for  
superior durability, weather protection &  
rich finish for your exteriors”*



JSW Paints Limited

Regd. Office: Jindal Mansion, 5A, Dr. G. Deshmukh Marg, Mumbai-400026.

For complaints, write to Customer Care Manager at above address or call 1800-121-5797.

For more information, visit [www.jswpaints.in](http://www.jswpaints.in) | Email: [ccpaints@jsw.in](mailto:ccpaints@jsw.in)